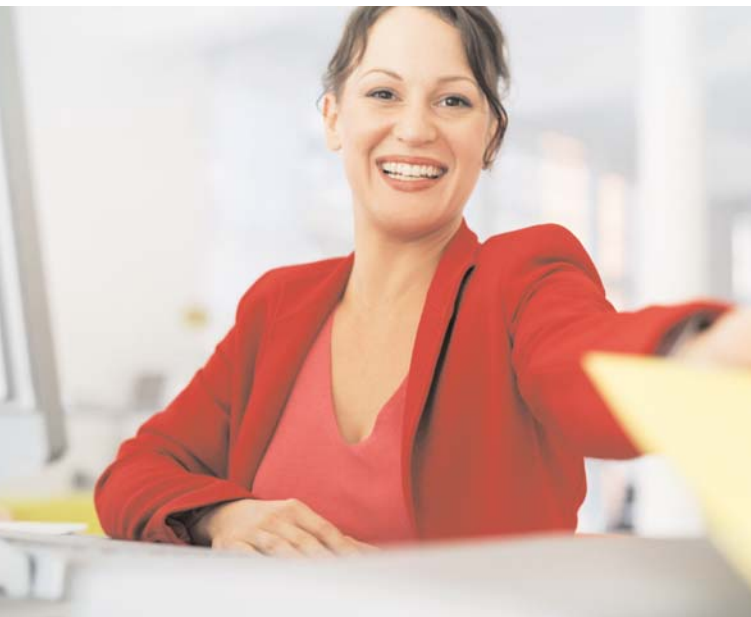


Advantages and Integration Environments of NaturalFinder

NaturalFinder helps you find the information you need in an easy, quick and efficient way

It is a complement for your search engine which includes language technologies that make it easy for users to search for information on the Internet and intranets, so that the search engine accommodates to the user's natural language and not the opposite.



Advantages of NaturalFinder

NaturalFinder offers evident advantages for improving the performance of traditional search engines:

Natural Language Interface

NaturalFinder makes possible to adapt search engines to your language, so that you no longer need to use more Boolean operators or wildcards to query. For example, with **NaturalFinder** you could make a query with these words:

- "I am looking for information on sharks in the Pacific but not Monterey"

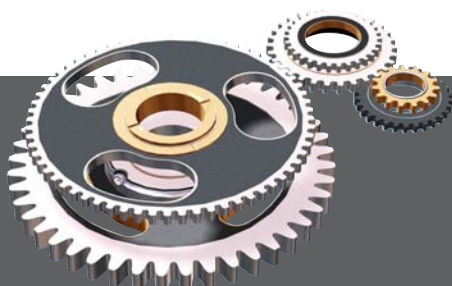
and you won't need to learn how to do it with Booleans like with the rest of the search engines in the market, where you would have to write

- "(shark|sharks)(\W+?\w+\W*){0,5}(Pacific)(\W+?\w+\W*){0,5}((?!(((Monte-rey))).+)(?!+(((Monte-rey))))))"

By being able to express yourself on your own words, examples of queries with negations or disjunctions, that require the use of Booleans operators AND, OR, NOT, become very easy with **NaturalFinder**.

Query Optimization

With **NaturalFinder** you find what you need even if your words do not match those of the document. **NaturalFinder** will locate the document if the meaning is the same, thus saving time since you do not have to repeat similar queries until you are sure that you have recovered all the relevant documents the way you have to with traditional search engines. This way, for example, if you look for information on



- "company mergers",

NaturalFinder will locate documents where you can read:

"How two companies merged into one big enterprise from..."

"The Nations two largest mortgage processing companies have merged"

"... there were companies that merged during this time, such as..."

"How are Merged Companies integrating systems..."

Semantic Relation Management

NaturalFinder also allows you to add your own synonym dictionary and establish semantic relationships thanks to the **DataNet** module which is included. With **DataNet** you will be able, for example, to establish that the words "advantages" and "benefits" are synonyms or that "ask" is a synonym of "request". Also, you will be able to specify that "Spain" is a part of "Europe" so that if we query for "business mergers in Europe", we can recover documents about "business mergers in Spain".

Spell Checking

NaturalFinder includes the best spell checker in the market, **DataSpell**, with more than 3 million words which have been linguistically validated, in addition to proper names. **DataSpell** detects spelling and typographic errors and suggests the correct query to prevent your query from failing to recover any document.

Filtered according to Absolute Relevance

Another advantage of **NaturalFinder** is the capability to cluster documents from a higher to lower relevance according with its absolute relevance and not only considering its relative relevance, like in traditional search engines. The absolute relevance is possible thanks to the syntactic analysis of the query. This way, for example, when asking for



Integration Environments

NaturalFinder is available both in Linux and Windows versions. **NaturalFinder** can be integrated with any search engine and environment, for example:

- Search engines for web pages
- Search engines for intranet
- Search engines for libraries
- Search engines for document (unstructured) databases or relational (structured) databases
- Customer and citizen service tools

If you do not have a search engine, **Bitext** can provide **dtSearch**, a tool of excellent efficiency, quality and price ratio.

"information about business mergers that are not from EON and Endesa",

NaturalFinder will return the documents of more relevance first, thanks to the linguistic analysis of the document itself.

By prioritizing the documents according to the absolute relevance and, only later, using the relative relevance, it is guaranteed that the user first finds those documents that are really pertinent to the query. That is how **NaturalFinder** is capable confirming whether the recovered documents for your query are relevant or not.

